

ARENBERGSCHOUWBURG

TECHNICAL RIDER LARGE AUDITORIUM



1. ADDRESS

APB ARENBERGSCHOUWBURG Provincie Antwerpen
Arenbergstraat 28
B-2000 Antwerpen
Registration number 0541 636 122 (no VAT number)

Phone +32 (0)3 202 46 11
Fax +32 (0)3 202 46 00
info@arenbergschouwburg.be
www.arenbergschouwburg.be

2. MANAGEMENT

Yvette Deploige (acting director)
yvette.deploige@arenbergschouwburg.be

3. SEATS

Seated configuration: 815 seats

- parterre: 581 seats of which
 - to be blocked obligatory:
 - 5 seats (L32 & L33 for theatre staff, F26, F24 and F22 for 2or3 wheelchairs)
 - to be blocked optionally:
 - 12 seats for PA (rows O and P seats 1 > 6),
 - 38 seats in case orchestra pit is used as such (rows A and B seats 1 > 17 + C20, C18, C19 and C21)
 - To be blocked obligatory (not applicable in case of private events):
 - 10 seats for the management of Arenberg (G1 > G6 and N14, N16, N18 and N20)
- balcony: 234 seats

In case of **standing configuration** of the auditorium (only first part of the parterre is standing), a max. capacity of **1150** people is allowed, of which 489 seated (balcony 234 seats, back of the parterre 255 seats)

- Shell-shaped room with dry acoustics (75 ms)

4. BOX OFFICE

Buy your tickets **online** 24h/24 via www.arenbergschouwburg.be

Or buy your tickets in person at **the box office of Arenbergschouwburg, Arenbergstraat 28, 2000 Antwerpen**

Opening hours Wednesdays and Fridays: 12.30 - 17.00
Every 1st Saturday of the month: 14.00 - 17.00
And 1 hour before each performance

Or by phone: **03 202 46 46**

How to pay?

- in cash (at the box office)
- by bank transfer within 5 working days on account No. BE84 7360 0725 5159 (BIC KREDBEBB), mentioning your client number
- by cash machine/ATM
- by credit card
- with culture cheques Sodexo and Accor
- with Arenberg gift vouchers

Ticketing software: SRO

5. INHOUSE CATERING

3hoek bvba

<http://www.3hoek.be>

General Coordinator

Billie Ayyildiz

catering@3hoek.be

0486 57 60 10

Invoice address:

Buerstedelei 20

2630 Aartselaar

VAT No. BE 874 382 645

Catering for artists & crew (beverages /sandwiches /meals) or for receptions/walking dinners/etc. may only be ordered from inhouse caterer 3hoek.

No other caterers allowed.

6. THEATRE STAFF

Maya Van der Brempt (head of theatre staff)

maya.vanderbrempt@arenbergschouwburg.be

- The doors of the venue open at 18.00 in case of an evening performance at the large auditorium and from approx. 19.30 in case there is only a performance at the small auditorium.
- The doors of the auditoriums will open at the earliest 30 minutes before the start of each performance.

7. CLOAKROOM

Use of cloakroom is compulsory.

8. ARTIST'S DRESSING ROOMS

Backstage entrance : Willem Tellstraat 2, 2000 Antwerpen

On the ground floor is a reception lift to the 1st, 2nd, 3rd and 4th floor

1st floor

- Artist green room
 - o large seat
 - o table and benches
 - o small kitchen
 - o monitoring from the event on stage
 - o listening on stage
 - o beverages possible (contact head of catering)
 - o 30 lockers for personal stuff (storage box with coin return)

2nd floor (at stage level)

- Office of the house technicians

- Dressing room "Première"
 - o suitable for 2 people
 - o grim tables / mirrors
 - o sofa
 - o sink and shower
 - o minibar
 - o listening on stage
 - o monitoring from the event on stage
 - o toilets

3rd floor

- Dressing room "Harlekijn"
 - o suitable for 2 people
 - o grim tables / mirrors
 - o sofa
 - o sink and shower
 - o minibar
 - o listening on stage
 - o monitoring from the event on stage
 - o toilets

- Dressing room "Colombine"
 - o suitable for 2 people
 - o grim tables / mirrors
 - o sofa
 - o sink and shower
 - o minibar
 - o listening on stage
 - o monitoring from the event on stage
 - o toilets

- Dressing room "Pierrot"
 - o suitable for 3 people
 - o grim tables / mirrors
 - o sofa
 - o sink and shower

- minibar
- listening on stage
- monitoring from the event on stage
- toilets

4th Floor

- Dressing room "Revue"

- suitable for 10 people
- grim tables / mirrors
- sink
- listening on stage
- monitoring from the event on stage
- on the same floor: toilets/sink/shower

- Dressing room "Cabaret"

- suitable for 5 people
- grim tables / mirrors
- sink
- listening on stage
- monitoring from the event on stage
- on the same floor: toilets/sink/shower

9. TECHNICAL INFORMATION

9.1 Stage (7meter above streetlevel)

- Useful latitude: 8 meter wide x 6 meter deep (playing surface)
- Flat wooden floor (750 kg / m²) (black)
- Fire Screen
- Height from floor to stage tower bottom grid is 11.50m over a width of 8.30m
- 28 flybars - computer controlled operation stage left, some in use for fixed blackdrops, legs, friezes, horizon, movie screen and inbetween curtains (operating system Stalogic Stakebrand)
- 1 entrance to dressing rooms (stairs)
- 1 side entrance to stage left (inclined plane) - FOH
- 1 entrance to stage right (stairs) - FOH
- Blackbox curtains (standard), horizon (white) and a moviescreen 6 m wide x 4m high
- Stairs on stage left and stage right to the front of house

Important remark:

The passage from the left to the right stage area is very narrow due to a corner of another building in the stage area (see schedule). One can also pass all the way through/via the ground floor, or go around the stage, but this of course takes a much longer time.

9.2 Measurements

- zeropoint is the back portal bridge (koperen kees)
- proscenium arch is : 8,65 m width x 5,5 m height
- portal bridge: normally 4 m en max. 5,5 m height
- manteau: 1,5 m width x 6 m height (retractable to an opening 6.5 m wide)
- from zeropoint to backwall stage: 10,10 m
- from zeropoint to front stage: 2,5 m (arch)
- from zeropoint to firescreen: 2 m
- from zeropoint to stageleft: 9,80 m
- from zeropoint to stageright: 6,7 m

Be aware that the largest passage to stage area is: 1,5 m width x 2,20 m height - (diagonal 2,60 m) and 5,88 m long

9.3 Flybars

- 26 flybars max.250 kg, 2 flybars max. 150 kg and 60 kg max. point load
- Available flybars: 2,3,4,7,8,9,13,14,15,16,17,18,20,24 en 27
- diameter of pipe is 5 cm
- computer operator stage left
- intercom
- monitoring from the event on stage

9.4 Intercom

- clear-com (everybody hears everybody)
- lightbox
- followspot
- flybar operator
- FOH curtain
- Sound engineer on stage right, and FOH
- callback to dressing rooms on stage right
- monitoring from the event on stage

9.5 Extra's

- red and blue backdrop
- white and black gauze
- glitter curtain
- 8 risers (2 x 1 m - 20, 40, 60, 80, 100 cm)
- 2 tables (2 x 1 m)
- 20 chairs (no armrest)
- 15 music stands

9.6 Orchestra pit

- arch shaped
- divided in 3 parts
- max. 20 musicians
- when using the orchestra pit the first two rows of seats of the parterre will have to be removed

9.7 Front of house curtain

- red velvet
- operated electrically
- closed in max. 6 sec
- operated from stage left or right

9.8 Electricity

- terminals on backstage left and right:
- 380/220 V - 63 A
- 380/220 V - 32 A
- 380/220 V - 125 A
- all on CEE

9.9 Lights (see lightplot)

- lightbox in the back of the auditorium, very good view of stage (fixed window)
- walking distance 30 m, cable distance 50 m
- lightdesk: ADB Mentor/XT/512 (DMX 512) and 24 subs extension (or lightdesk Pearl 2004) + Avolite or Avolite Expert
- intercom to stage and followspot
- callback to dressing rooms
- basic stagelight: see lightplot

Extra lights

- 8 x 4 bar CP60
- 8 x 4 bar CP62
- 10 pars CP60
- 10 pars CP62
- 16 PC ADB 1kW
- 13 Robe Colorspot 250AT Mode4
- 7 Robe Robin plasma wash 300^E Mode1
- 10 floorcan Par CP62/500Watt
- 10 profile 800W - Med ADB Warp 12°-30°
- 4ACI sets Par64

- 8ALC4-2 ADB
- 2 profile 1 kW - Wide
- 2 profile 1 kW - Wide (condensa)
- 4 stands 2,5 m high
- 6 floorstands
- followspot 1 x HMI 1200 W (no operator!)
- DF50 (1) + Unique (1)

DMX line

- lightbox to stage (5 pin)
- stage left to stage right (5 pin)
- lightbox to the center of the auditorium (sound engineer) (5 pin)
- 152 circuits 60 x 2 kW, 60 x 5 kW, 32 Sinusdimmers (Frontlight)

9.10 Sound

- Sounddesk - Soundcraft GB2, GB4 or Yamaha LS9 (digital)
- F.O.H. with
 - 2 x D&B Q-Sub + 1x D&B Q-7 (configuration on each side)
 - 2 x front fill D&B E3 + under Balcony 4 x D&B Delay E3
 - 2 x Center cluster D&B Ci90 + Cluster L+R D&B Ci90
 - Patchpanel stage Jardin
- 14 monitors MAX15
- All amplifiers, equ, etc. are set in function of the house acoustics, with a production of 105 dBA, no distortion and flat, equally spread over the audience.
- Sound levels are monitored during the whole performance and limited according VLAREMII laws. Maximum soundlevel of ≤ 100 dB(A) $L_{Aeq,60min}$: (environmental license class II)

Extra's

- | | | |
|-----------------------------------|----------------------|----------------------|
| • 6 shure SM 58 | * 1 shure B52 | * 1 shure B91 |
| • 6 shure SM 87 | * 2 shure Beta 57 | * 2 neumann km 184 |
| • 1 wireless shure handheld SM 58 | * 3 sennheiser E 604 | * 2 sennheiser E 906 |
| • 2 MD | * 2 sennheiser C 451 | |
| • 2 CD | | |
| • 5 stands | | |
| • 3 small stands (table) | | |

Cabling

- 5 x 20 m (XLR)
- 10 x 10 m
- 10 x 5 m
- 4 x 2 m
- Small soundmulti stage to lightbox 4 in/4 out on XLR

Sound - visitors:

- There are 2 x 6 seats available for the visitor's sound system (not under the balcony) - in case you want to use this possibility, the house technicians have to be informed at least a fortnight in advance
- There is a lifting table (max 1000kg) for the sound desk FOH
- The auditorium is shell shaped and has a very dry acoustic resonance (0,75 sec)
- Cable distance to the stage (from sound FOH) is min. 40 m.
- There is an intercom to the stage available

9.11 General remarks:

- Strict no-smoking policy: smoking is prohibited in the entire building!
- WIFI/internet: free wifi network available in the surroundings of the stage, the backstage areas and the foyers. A personal login-code has to be applied for with your mobile phone.
 1. Go to Wi-Fi connections
 2. Choose the Wi-Fi "HOTSPOT_PA"
 3. Open your browser and surf to any site. Then you will get a sign-in page.
 4. Enter your email address and mobile number (don't forget the country code) (+32, +31, etc...)
 5. Log on to the network with the sms/text message code you received (a 24h permission)
- The use of open flames/fireworks/pyrotechnics is strictly forbidden. The use of confetti/snow/glitter/foam/bubble machines/etc. has to be discussed with the house technicians at least 1 month beforehand.

10. LOADING IN & OUT

- Enter the dead-end street "Willem Tellstraat" backwards. At the end of this street is the loading area. There is no permanent parking space here for trucks and cars. Only load in or out is allowed at the Willem Tellstraat.
Be aware that moving bollards block the entrance to this street: they can be taken down by our technicians.
- There is no loading dock or bad weather protection.
- There is a 7 m height difference between street and stagelevel
- freight elevator at 5 m from loading area
- measurements door elevator
 - width: 1,5 m
 - height: 2,2 m
 - diagonal: 2,6 m
 - longest piece possible inside lift: 5,88 m
 - height lift cage: 3 m
- lift speed from level 0 to stage is 40 sec
- max weight of freight: 2.5 tonnes

11. THE TECHNICAL CREW

- 6 technicians (working hours from 9-12h and from 13-17h)
- With every evening performance: 1 on stage, 1 in lightbox (present 1 hour before the show)
- For practical and organizational reasons, no stuff from the large auditorium can be used in our small "club", or vice versa. No material belonging to the venue can be borrowed by others, not even by close partners of the venue!

11.1 More questions?

Contact

Guy Verhaegen (chief technician)

Arenbergshouwborg
Arenbergstraat 28
2000 Antwerpen

Cell +32(0)472 01 55 79
Phone +32(0)3 202 46 51

guy.verhaegen@arenbergshouwborg.be

techniekers@arenbergshouwborg.be

12. CONTACT INFORMATION

General information

E-mail: info@arenbergschouwborg.be

www.arenbergschouwborg.be

12.1 Head of programming

Jef Staes

Phone 03 202 46 27

jozef.staes@arenbergschouwborg.be

12.2 Head of production

Sylvie Svanberg

Phone 03 202 47 03

sylvie.svanberg@arenbergschouwborg.be

12.3 Box office

Phone **03 202 46 46** (on Wednesdays and Fridays from 12.30<17.00 and every first Saturday of the month from 14.00<17.00)

ticket@arenbergschouwborg.be

Lea Herstraets (head of ticket office)

Phone 03 202 46 23

lea.herstraets@arenbergschouwborg.be

12.3 Technical department

Guy Verhaegen (chief technician)

0472 01 55 79 or 03 202 46 51/50

guy.verhaegen@arenbergschouwborg.be

Phone 03 202 46 51 (other technicians)

Phone 03 202 46 53 (lightbox - do not contact this number during a performance)

techniekers@arenbergschouwborg.be

www.arenberg.tk

12.4 Administration

Koen Waterschoot & Koenraad Logghe (accounts dept.)

Phone 03 202 46 36 and 03 202 46 25

koen.waterschoot@arenbergschouwborg.be

koenraad.logghe@arenbergschouwborg.be

Maya Van der Brempt (rent of the auditorium/production/head of theatre staff/...)

Phone 03 202 46 45

maya.vanderbrempt@arenbergschouwborg.be

Ingrid De Scheemaeker (rent of the auditorium/advance production)

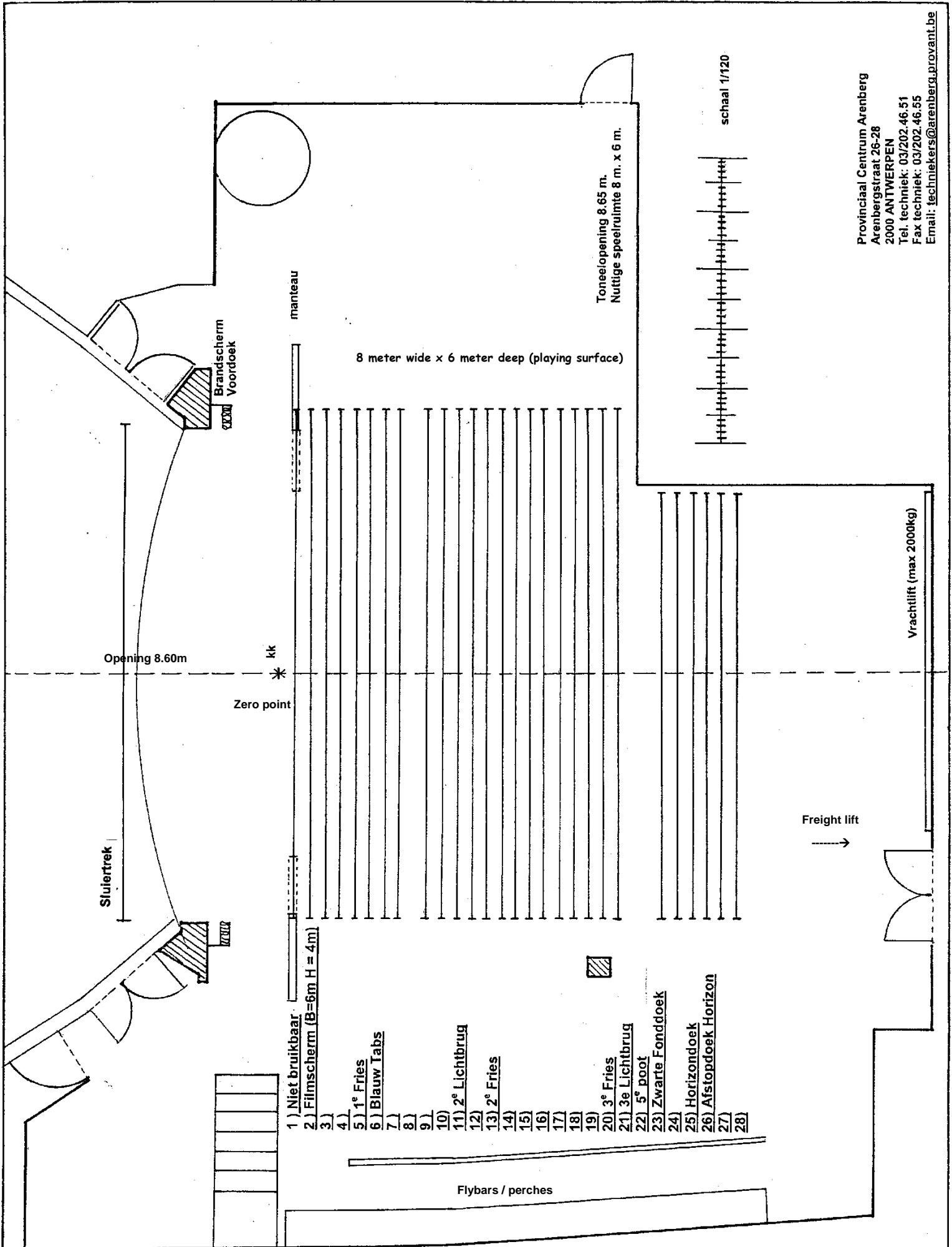
Phone 03 202 46 38

ingrid.descheemaeker@arenbergschouwborg.be

Guy Augustus (building management)

Phone 03 202 46 55

guy.augustus@arenbergschouwborg.be



Opening 8.60m

Sluierrek

Zero point

kk

manteau

8 meter wide x 6 meter deep (playing surface)

Toneelopening 8.65 m.
Nuttige speelruimte 8 m. x 6 m.

schaal 1/120

Vrachtlift (max 2000kg)

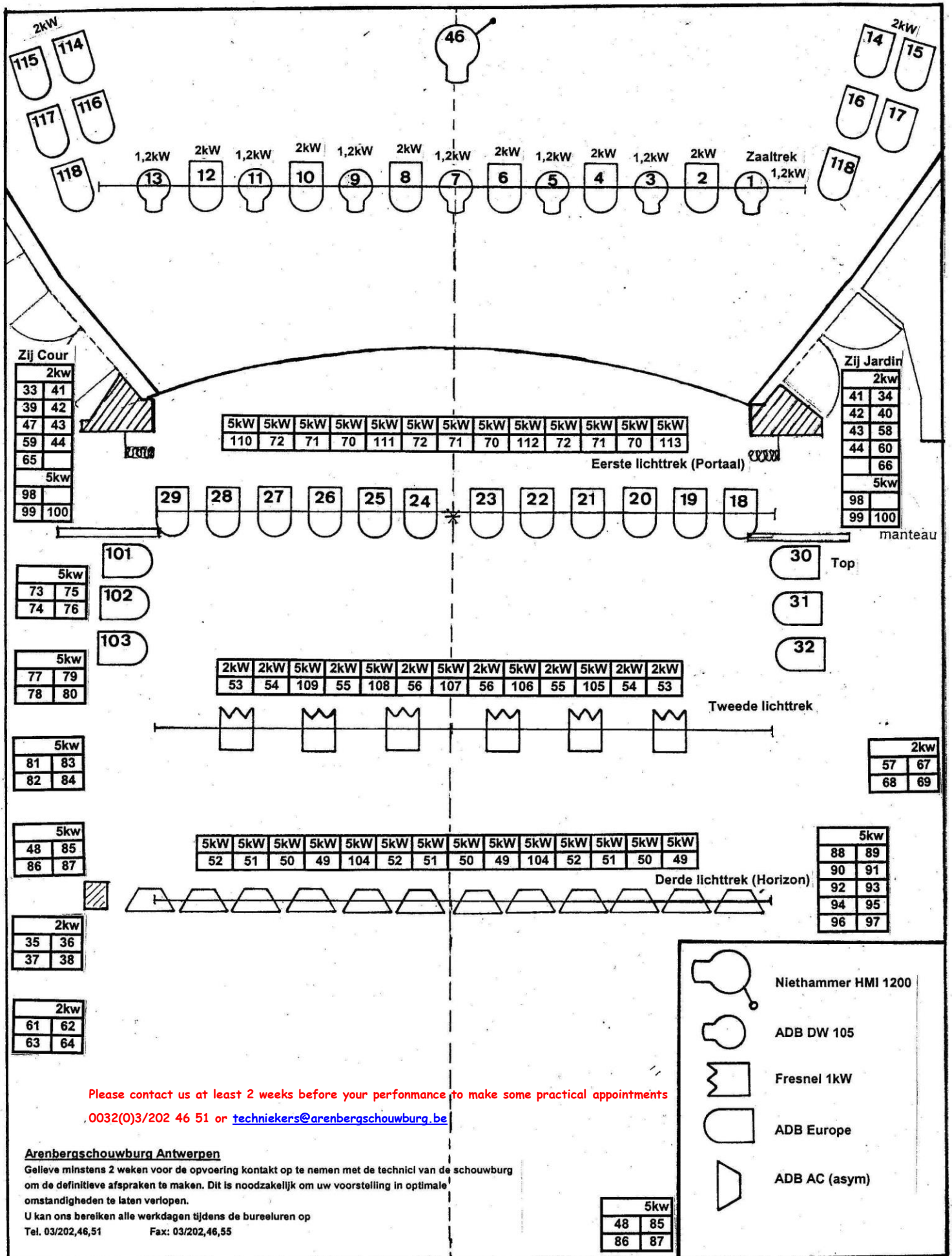
Freight lift
→

- 1) Niet bruikbaar
- 2) Filmscherm (B=6m H=4m)
- 3)
- 4)
- 5) 1° Fries
- 6) Blauw Tabs
- 7)
- 8)
- 9)
- 10)
- 11) 2° Lichtbrug
- 12)
- 13) 2° Fries
- 14)
- 15)
- 16)
- 17)
- 18)
- 19)
- 20) 3° Fries
- 21) 3e Lichtbrug
- 22) 5° poot
- 23) Zwarte Fondonoek
- 24)
- 25) Horizontondoek
- 26) Afstopdoek Horizon
- 27)
- 28)

Flybars / perches

Brandscherm
Voordoek

Provinciaal Centrum Arenberg
Arenbergstraat 26-28
2000 ANTWERPEN
Tel. techniek: 03/202.46.51
Fax techniek: 03/202.46.55
Email: techniekers@arenberg.provant.be



Please contact us at least 2 weeks before your performance to make some practical appointments
 0032(0)3/202 46 51 or techniekers@arenbergschouwborg.be

Arenbergschouwborg Antwerpen

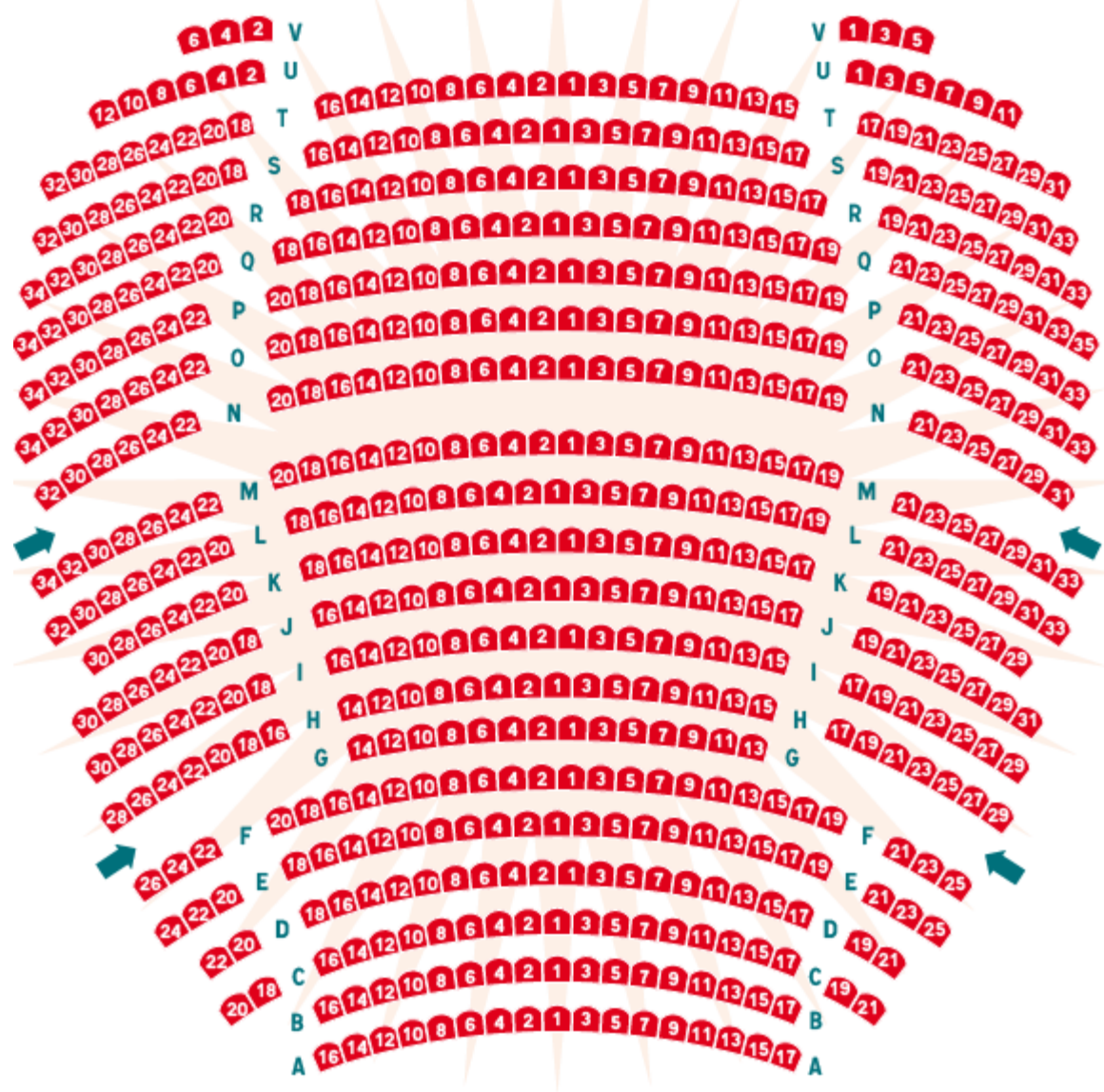
Gelieve minstens 2 weken voor de opvoering contact op te nemen met de technici van de schouwborg om de definitieve afspraken te maken. Dit is noodzakelijk om uw voorstelling in optimale omstandigheden te laten verlopen.

U kan ons bereiken alle werkdagen tijdens de bureluren op
 Tel. 03/202,46,51 Fax: 03/202,46,55

5kW	
48	85
86	87

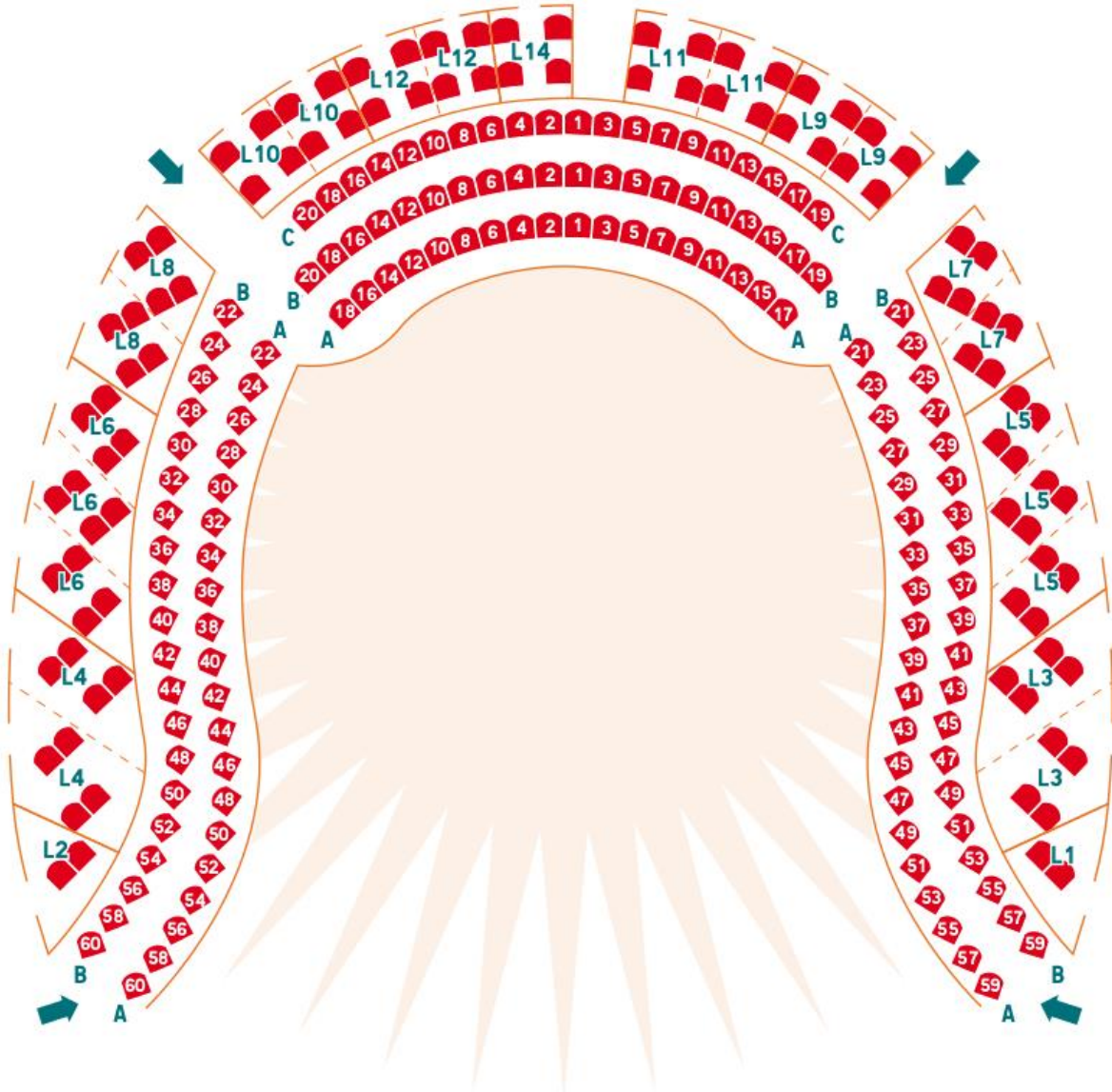
GROTE ZAAL

parterre



PODIUM

GROTE ZAAL balkon



PODIUM